

Electromechanical operator with articulated arm for residential use, for swing gate leaves of up to 2 metres and 200 kg. Ideal for all installation situations, with a lever system for the simple resolution of problems linked to large-size pillars. Control unit, limit switches and mechanical stops incorporated in operator.

Code	
P930116 00002	VIRGO
P930116 00001	VIRGO 120
P930117 00002	VIRGO SQ
R930130 00001	KIT VIRGO FRA
R930130 00002	KIT VIRGO ITA



## PLUS



Built-in control units with programming display and automatic setting menu.



Built-in, adjustable mechanical stops and electromechanical limit switches.

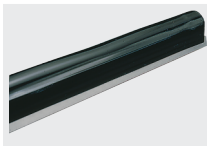


Aluminium structure with high-resistance paint treatment.

## Technical features

	VIRGO	VIRGO SQ
Control unit	LINX	
Operator weight	8 kg	6 kg
Operator type	electromechanical swing operators with articulated arm	electromechanical swing operators with articulated arm
Power supply	24 V	24 V
Power input	110 W	110 W
Maximum angle	120 °	120 °
Cycle time	14 sec	14 sec
Type of limit switch	electromechanical	electromechanical
Slowdown	yes	yes
Impact reaction	electronic torque limiter	electronic torque limiter
Locking	mechanical	mechanical
Release	lever and triangle key	lever and triangle key
Frequency of use	semi-intensive	semi-intensive
Environmental conditions	from -15 °C to 50 °C	

## ACCESSORIES



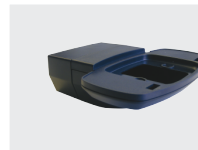
**BIR C - N190104**  
Rubber safety edge (H 30 mm), price per m



**RADIUS B LTA 24 R2 - D113749 0003**  
Flashing beacon without built-in antenna for 24V motors Flashing light without incorporated antenna for motors with power supply 24 V.



**RADIUS B LTA 24 R1 - D113748 0003**  
Flashing beacon with built-in antenna for 24V motors Flashing light without incorporated antenna for motors with power supply 24 V.



**B 00 R02 - P123025**  
Wall mounting for B LTA series flashing beacons



**B 00 R01 - P123026**  
Metal guard for B LTA



**Mitto B Rcb02 R1 - D111904**  
Transmitter with channels. Range . Power supply with 1 battery type 23 A



**Q.BO TOUCH - P121024**  
Wireless digital touch button panel 433Mhz rolling code.



**Q.BO KEY WM - P121022**  
Key selector for outdoor use with double contact.



**Q.BO KEY WM AV - P121023**  
Vandalproof key selector with metal structure. Vandalproof key selector with double contact, for outdoor use. Metal structure.



**DESME A15 - P111526**  
Pair of self-aligning photocells. Range 30 m. Power supply 24 V ac/dc. Pair of self-aligning photocells. Range 30 m. Power supply 24 V ac/dc.



**PHP - P903018**  
Pair of aluminium posts for THEA/DESME photocells



**VIRGO BAT - P125008**  
Set of backup batteries for VIRGO

## ACCESSORIES



### **BOX - N574039**

Wall-mounted safe for steel cable release and electric control



### **CMS - D831081** Sign